

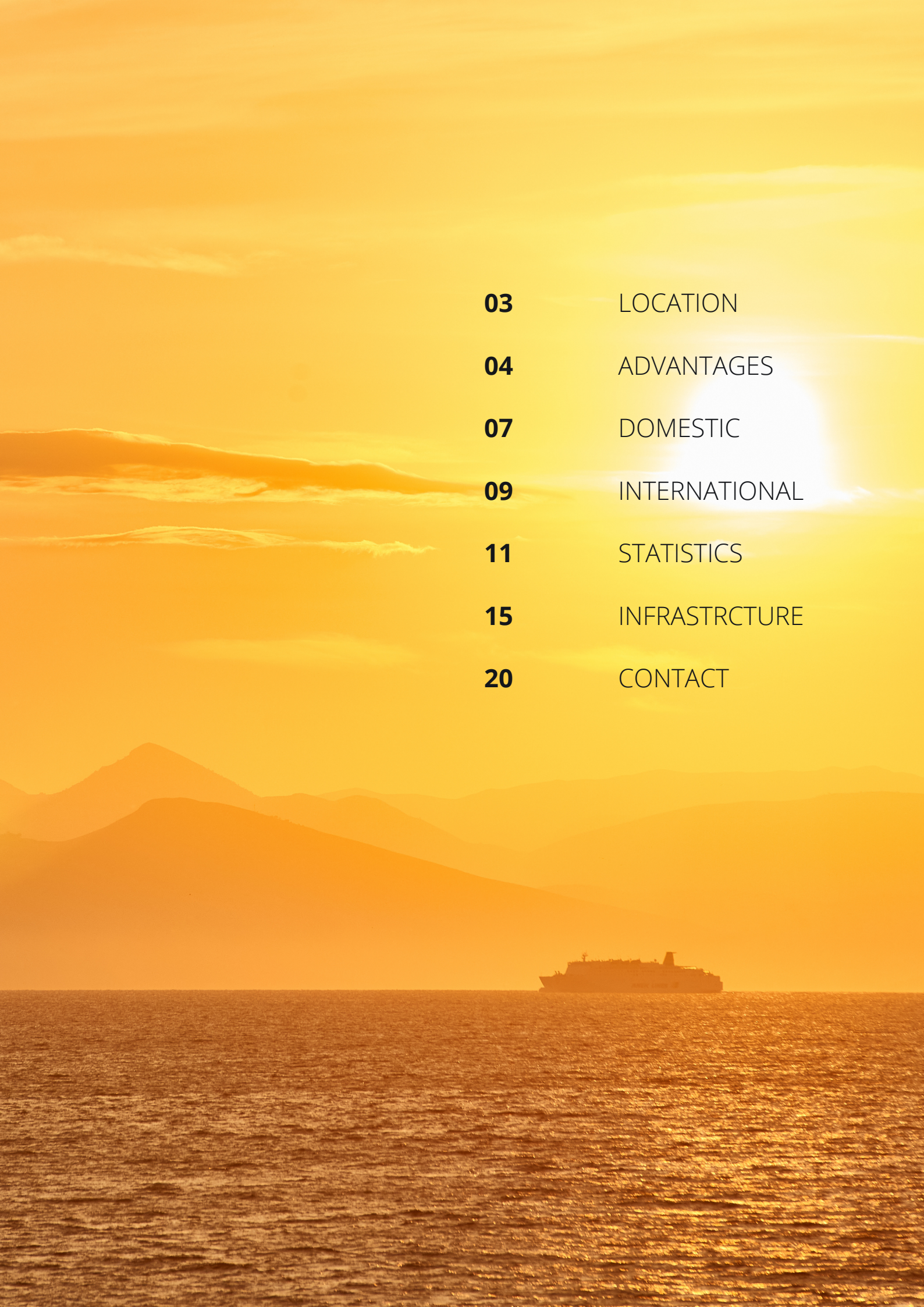
# PORT OF IGOUMENITSA

Gateway  
Between Europe  
and  
Southwest Asia



A FERRY SHIPPING NEWS PUBLICATION  
MARCH 2022





<b>03</b>	LOCATION
<b>04</b>	ADVANTAGES
<b>07</b>	DOMESTIC
<b>09</b>	INTERNATIONAL
<b>11</b>	STATISTICS
<b>15</b>	INFRASTRUCTURE
<b>20</b>	CONTACT





250,000  
yearly



2.5 million

**Igoumenitsa**

The port of Igoumenitsa is geographically the closest port of Greece with Italy and the Balkan countries of the Adriatic Sea, thus becoming a major connection for passengers and goods traffic, to, and from Western Europe



# Advantages of Igoumenitsa Port

- One of the largest international ferry ports in Greece, as well as in the Eastern Mediterranean
- Main Western Sea Gate of Northern Greece, but also of the Southern Balkans to Western Europe
- A very important transport hub due to the convergence of the axes of the Egnatia Motorway and the Ionian Motorway
- Start place of the Egnatia. It is a hub of international transport in the Southern Balkans, the Black Sea countries and Asia
- It is possible to exploit the Motorways of the Sea, mainly the transport corridor of the Adriatic
- The port of Igoumenitsa offers port infrastructure that promotes combined transport





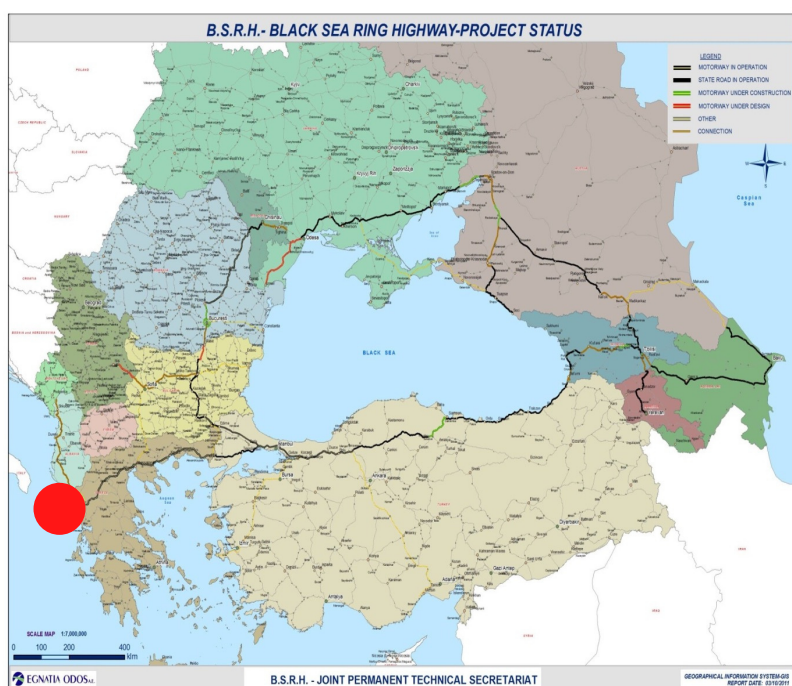
# The key position of Igoumenitsa in the Greek road network







The current situation in Ukraine certainly poses threats to economic life in general but it highlights the significance of the Port of Igoumenitsa as well as the important opportunities that can be exploited by the restructuring of road transport from Russia to Europe.



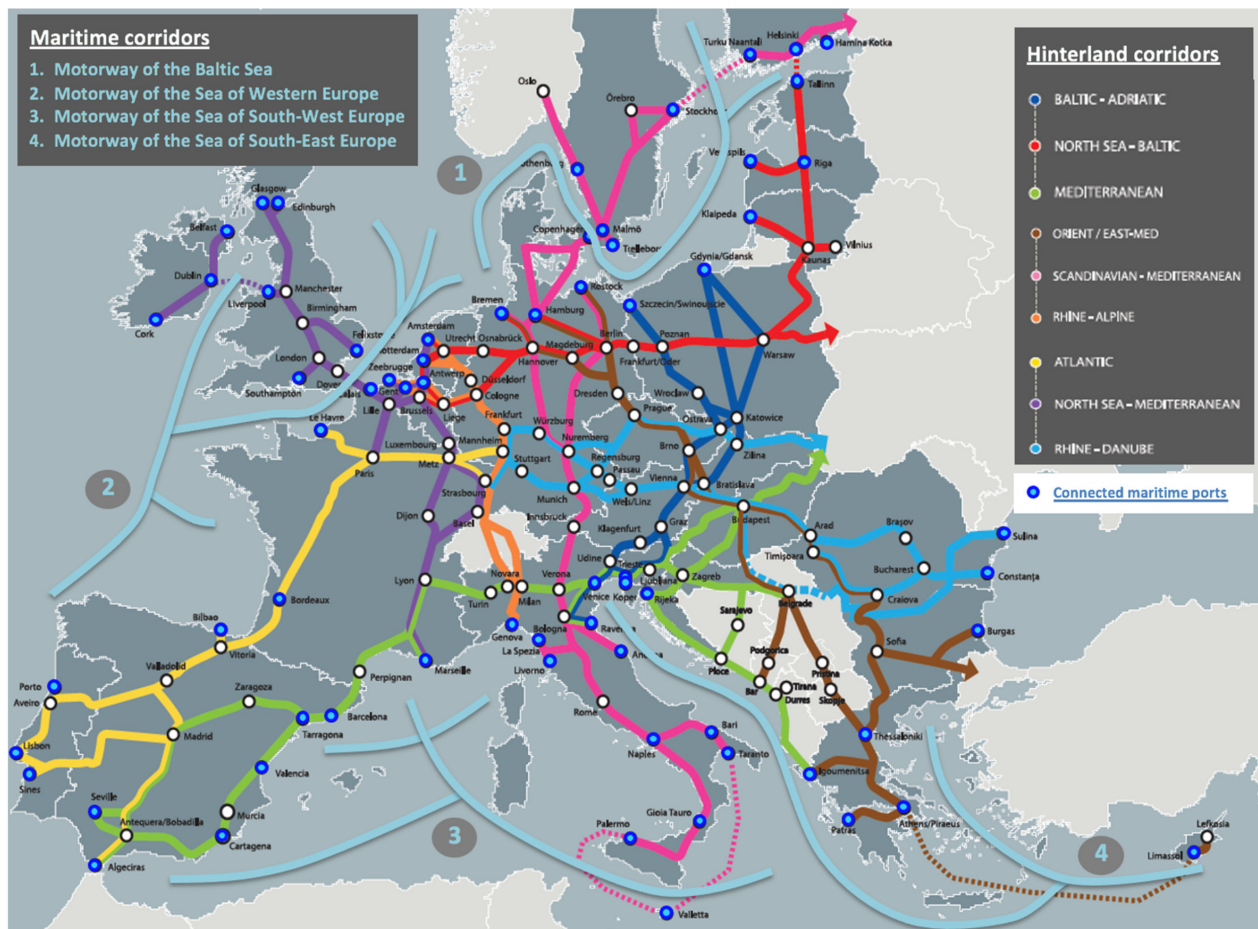
## Black Sea Ring Highway

The Black Sea Ring Highway is 7,000km long, extending around the Black Sea, in the BSEC (\*) Member States, with vertical axes to Azerbaijan, Serbia and Albania, which are also member countries of BSEC.

(\*) BSEC Black Sea Economic Cooperation



# Igoumenitsa, part of the European Commission's Trans-European Transport Network (TEN-T)



The Port of Igoumenitsa is one of the four larger ports of Greece (Piraeus, Thessaloniki, Patras) that is part of the European Commission's Trans-European Transport Network (TEN-T).

TEN-T has nine core network corridors and the Port of Igoumenitsa is part of the Orient – East Med corridor, which connects large parts of Central Europe with ports of the North, Baltic, Black and Mediterranean Seas. It focuses upon fostering the development of these ports as major multimodal logistics platforms and providing economic centers in central Europe with modernized, multimodal connections to Motorways of the Sea.

The corridor incorporates the Elbe River as a key inland waterway and will improve multimodal connections between Northern Germany, the Czech Republic; the Pannonian region and Southeastern Europe. The corridor will also provide an improved link to Cyprus.







# Domestic Ferries

Diapontia Islands

Corfu

Igoumenitsa

Lefkimmi

Paxos

  
**KERKYRA  
SEAWAYS**

  
**KerkyraLines**

 **LEFKIMMILINES**  
[www.lefkimmilines.gr](http://www.lefkimmilines.gr)

## Distances from Igoumenitsa to

- Corfu: 18 nautical miles
- Lefkimmi: 12 nautical miles
- Paxos: 21 nautical miles
- Patras: 123 nautical miles







Venice



Ravenna



Ancona



Bari



Brindisi



Corfu

Igoumenitsa



Sami



Patras



Athens

 **ANEK LINES**  
 **SUPERFAST FERRIES**

 **MINOAN LINES**  
a Grimaldi Group company

 **VENTOURIS FERRIES**

 **SHIPS**  
—MANAGEMENT—



# International Ferries

## Distances from Igoumenitsa to

- Venice 525 nautical miles
- Ancona 405 nautical miles
- Bari 190 nautical miles
- Brindisi 130 nautical miles









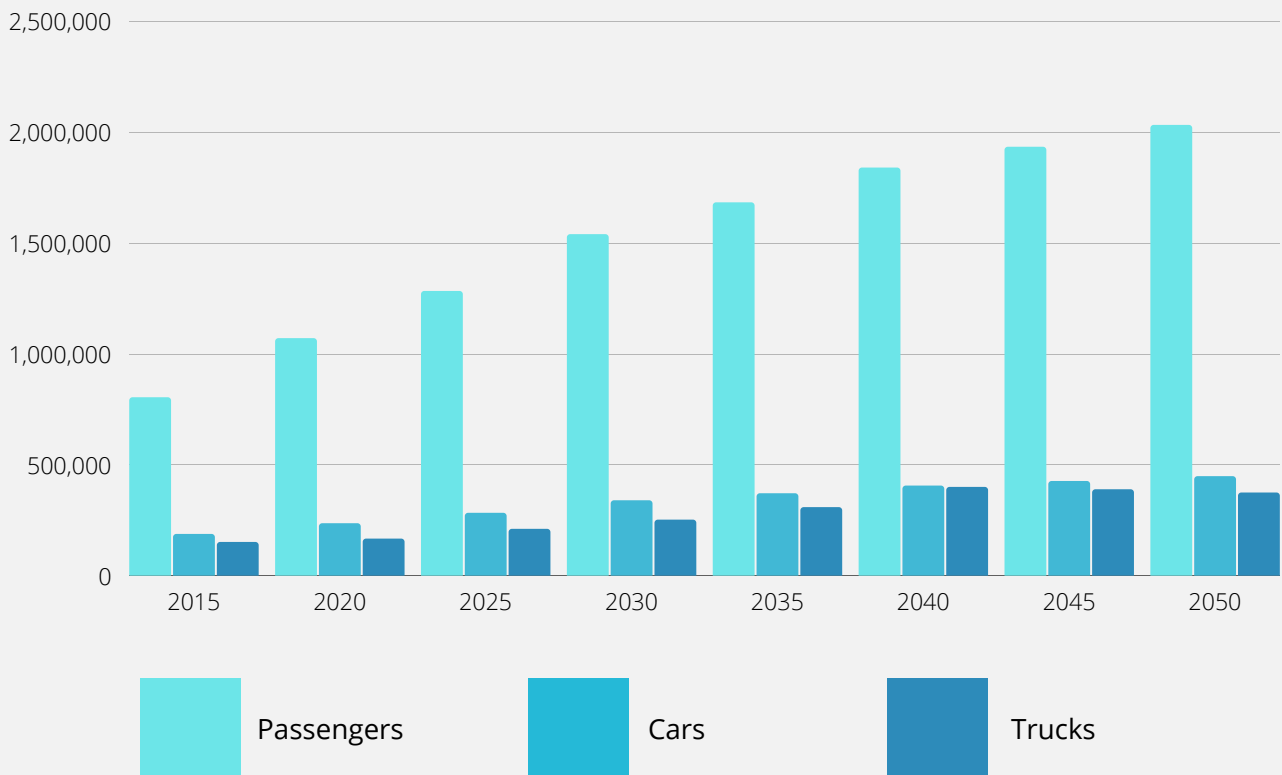
# Statistics

## Total Arrivals (2021)

Month	Arrivals from Abroad	Domestic Arrivals	RoRo Arrivals from Abroad	Domestic RoRo Arrivals
January	247	375	41	2
February	212	345	39	3
March	225	479	20	2
April	242	545	27	2
May	232	519	75	5
June	232	560	63	3
July	240	774	70	4
August	253	918	92	3
September	213	692	41	4
October	205	575	47	3
November	187	484	46	1
December	171	440	43	1
<b>Total</b>	<b>2,659</b>	<b>6,706</b>	<b>604</b>	<b>33</b>

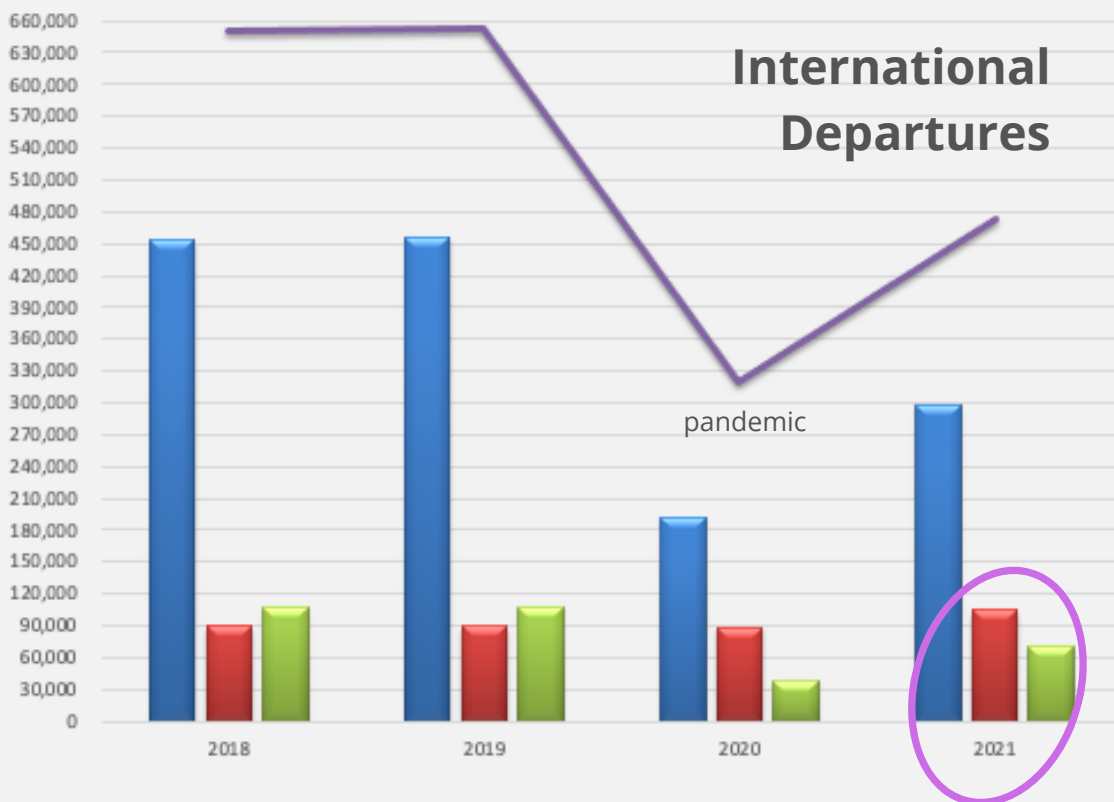
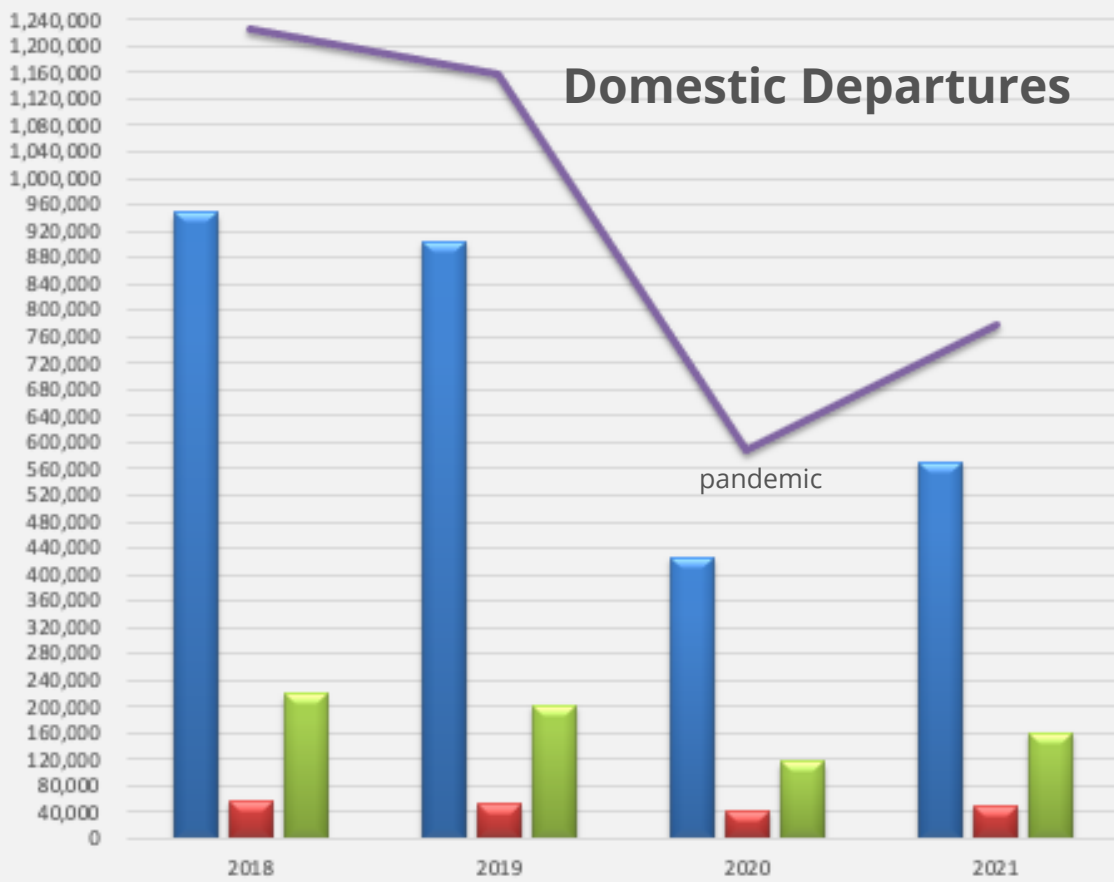


## Forecast: International Traffic 2015 – 2050





Passengers
  Freight
  Cars
  Total



2019-2021 = +17% trucks





# Strengthening and Upgrading Infrastructure



Construction of Igoumenitsa business park - freight center

Construction of the road connection of the center with EGNATIA Motorway and the Port of Igoumenitsa





### Phase A

Total Area: 130,000 m<sup>2</sup>

Port Zone: 80,000 m<sup>2</sup>

Twelve (12) mooring ramps

Total Pier Length: 781 m

Central Pax Station: 6,326 m<sup>2</sup>

Fire Station: 612 m<sup>2</sup>

### Phase B

Total Area: 118,000 m<sup>2</sup>

Annular Dock 197.6 m long

New Quay: Length 371 m

Channel Widening: 2,000 m/ Width 170m / Depth 10.5 m

Pax Terminal B: 3,040 m<sup>2</sup>

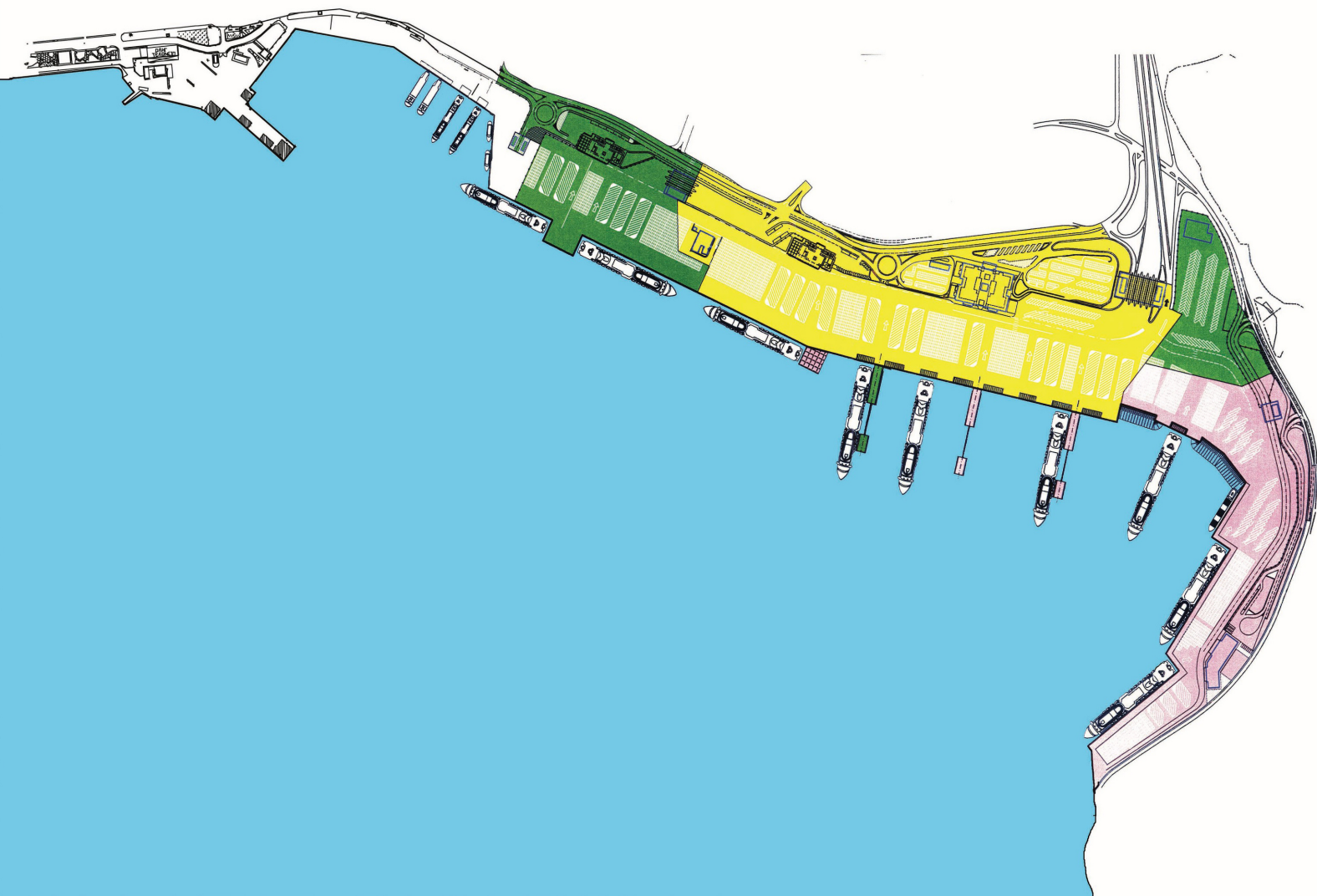
Pax Terminal C: 2,324 m<sup>2</sup> (Under Construction)

### Phase C (Under Construction)

Construction of the Southern Quay: Length 610 m

Annular Dock 198 m long

Total Area: 90,000 m<sup>2</sup>





# Port of Igoumenitsa Infrastructure

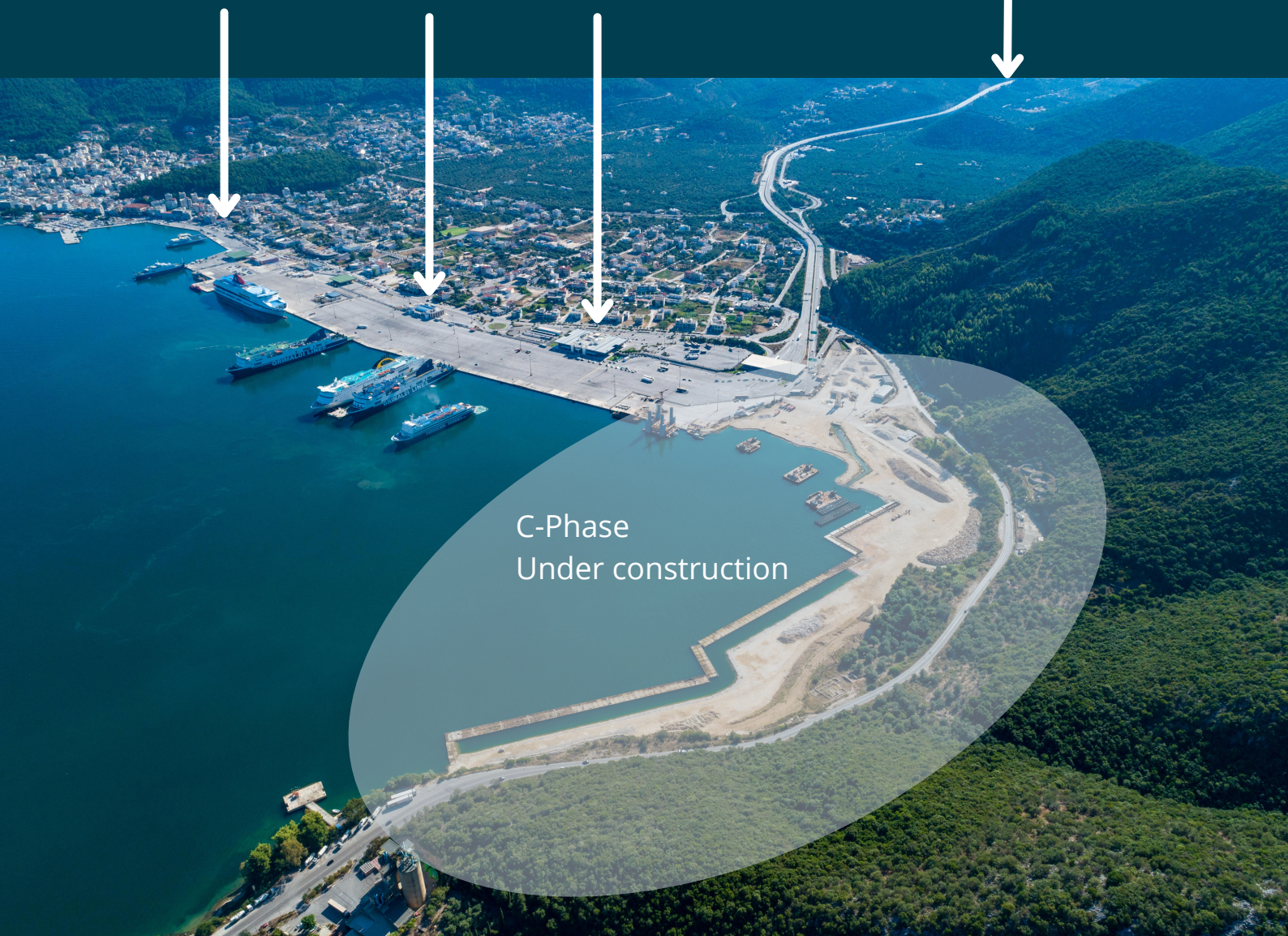


Domestic  
Services  
Old Port

B-Phase

New Port  
Infrastructure  
A-Phase

Egnatia  
Motorway



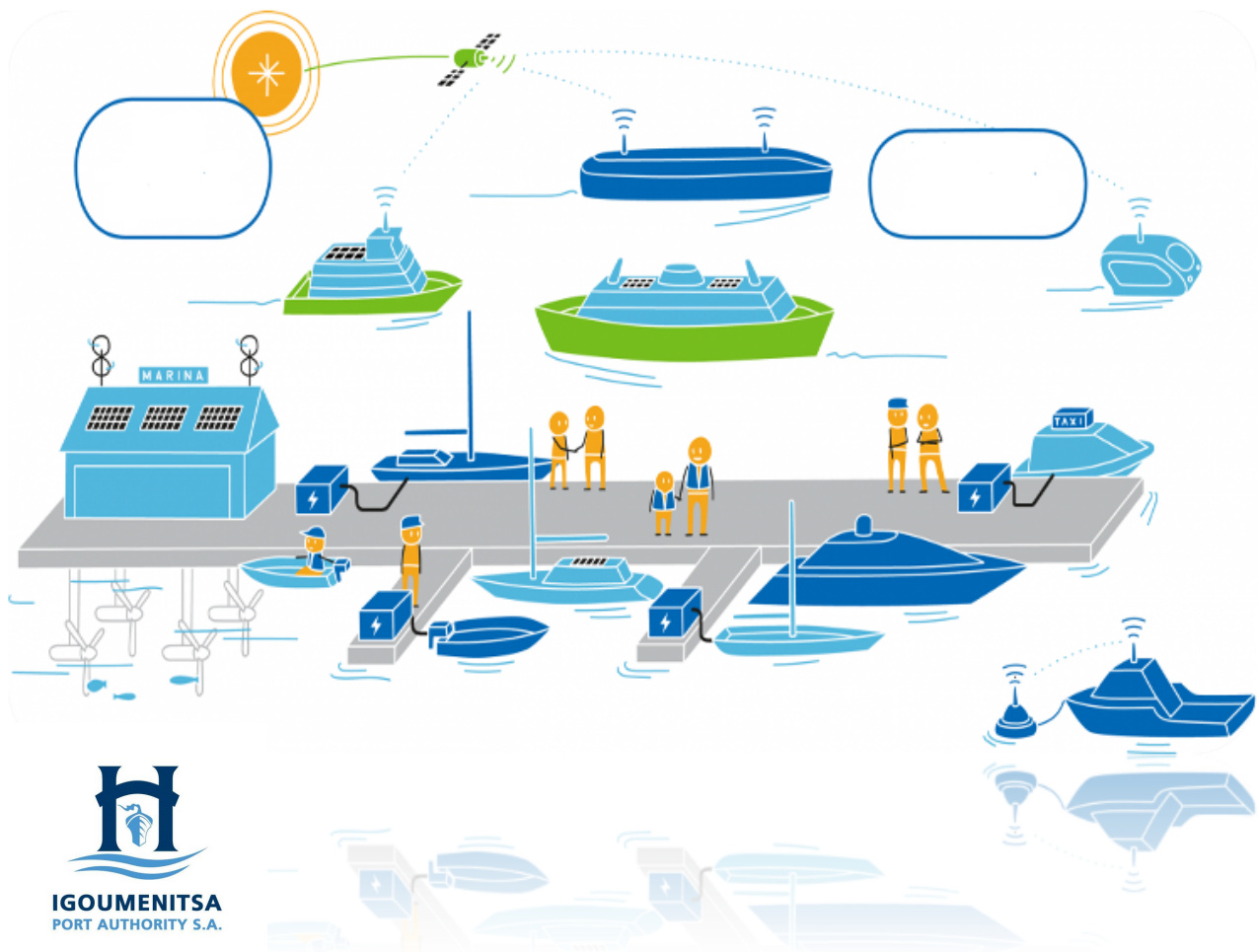


# Green Port

## Zero Energy Port

**The aim of Igoumenitsa Port Authority is to:**

- Improve the environmental footprint of the Port of Igoumenitsa as well as the ships served by it.
- Promote innovative and environmentally friendly technologies as well as a holistic approach to the effective management of the port's energy-intensive activities.
- Achieve the energy needs of the Port in order to be served solely by Renewable Sources.





# Action Plan – Axis of Implementation

## Axis 1:

Study Co-financing POSEIDON-MED II

Use of LNG as an alternative fuel



## Axis 2

Study Co-financing ALFION

Power Supply of Ships from land (Cold Ironing)

Intelligent Energy Consumption Management and Monitoring System

Electric vehicle charging system

Energy Storage System

## Axis 3

Study Co-financing ECO-WAVES

Port Waste Management Study



## Axis 4

Study Co-financing Igoumenitsa Port Authority

Environmental Management Certification

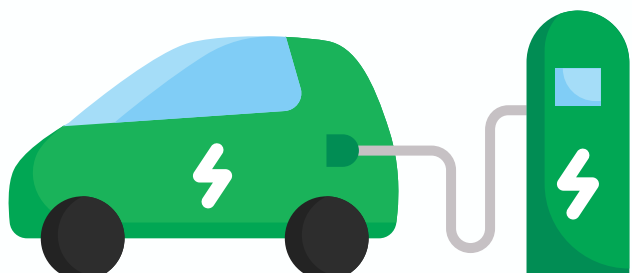
Creation of a photovoltaic park

Replacement of light bulbs with Led technology

Installation of geothermal system

Rainwater collection as an alternative water intake

Desalination system







**IGOUMENITSA**  
PORT AUTHORITY S.A.

# Contact



**Athanasios Porfiris**  
**Chief Executive Officer**

**[olig@olig.gr](mailto:olig@olig.gr)**

Tel: +30 26650 99300

Fax: +30 26650 99330

e-mail: [ceo@olig.gr](mailto:ceo@olig.gr)

Web: [olig.gr](http://olig.gr)

**Photo Credits:** Port of Igoumenitsa, Spyros Roussos, Mike Louagie, IMO, Shutterstock

**Design:** Mike Louagie

**Publisher:** FERRY SHIPPING SUMMIT B.V.

**Kennemerboulevard 664, 1976 ER IJmuiden, The Netherlands**